

WHAT TYPE OF LEADER ARE YOU?

When you walk into the school cafeteria, can you spot a leader? Is it the kid who speaks the loudest? The one who talks to the most people? The kid who bosses friends around?

Leaders on TV and in movies are often bossy or unkind. But in real life, the most effective leaders will cooperate and bring out the best in others. That's **servant leadership**—when someone focuses on serving and empowering a group. It's

encouraging people to use their skills, express their ideas, and feel good about their efforts.

For example, if you're the soccer team captain, do you decide on every play without talking to the coach and other players? If you're a servant leader, you listen carefully and combine everyone's best abilities and ideas. Your leadership helps your team work together—and that's the best kind of win!

ARE YOU A SERVANT LEADER?

Circle your answer under each statement, then add up your points.

- 1 I believe that having fun together is an important goal for any group.

Always = 3 • Sometimes = 2 • Never = 1

- 2 I keep an open mind and encourage people to share their opinions.

Always = 3 • Sometimes = 2 • Never = 1

- 3 I consider what's best for the group and its goals, not just what I want for myself.

Always = 3 • Sometimes = 2 • Never = 1

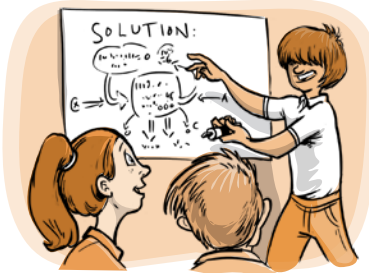


- 4 I'm courteous to the team, such as by saying please and thank you.

Always = 3 • Sometimes = 2 • Never = 1

- 5 When opinions are different, I look for things we agree about, rather than choosing sides.

Always = 3 • Sometimes = 2 • Never = 1



- 6 I realize mistakes will happen, and I try to learn from them.

Always = 3 • Sometimes = 2 • Never = 1

- 7 I get others involved in making important decisions.

Always = 3 • Sometimes = 2 • Never = 1

- 8 When there's a problem, I focus on finding a positive solution, rather than complaining or blaming others.

Always = 3 • Sometimes = 2 • Never = 1

- 9 I listen carefully, and I urge my team to respect everyone's ideas.

Always = 3 • Sometimes = 2 • Never = 1

- 10 I try to understand the feelings of each person on the team.

Always = 3 • Sometimes = 2 • Never = 1

- 11 I stay flexible and calm when people disagree with me.

Always = 3 • Sometimes = 2 • Never = 1

- 12 I give others praise for their great work and ideas.

Always = 3 • Sometimes = 2 • Never = 1



SCORING

MY TOTAL:

36–28 points: You're doing a great job as a servant leader! Keep encouraging and helping others.

27–20 points: You have lots of positive leadership skills. Keep up the good work as you learn more skills.

19–12 points: With practice, you can grow as a leader. Look at the quiz for ideas to work on.